

Public Health Services Update

Lynne McNiven
Public Health Consultant
Nottingham City Council

Public Health Services Update



Public Health | publichealth.analysts@nottinghamcity.gov.uk

Ward Health Profile
Aspley Ward

17,622 Ward Residents in 2011



**Nottingham
City Council**

Public Health Services Update

PUBLIC
HEALTH

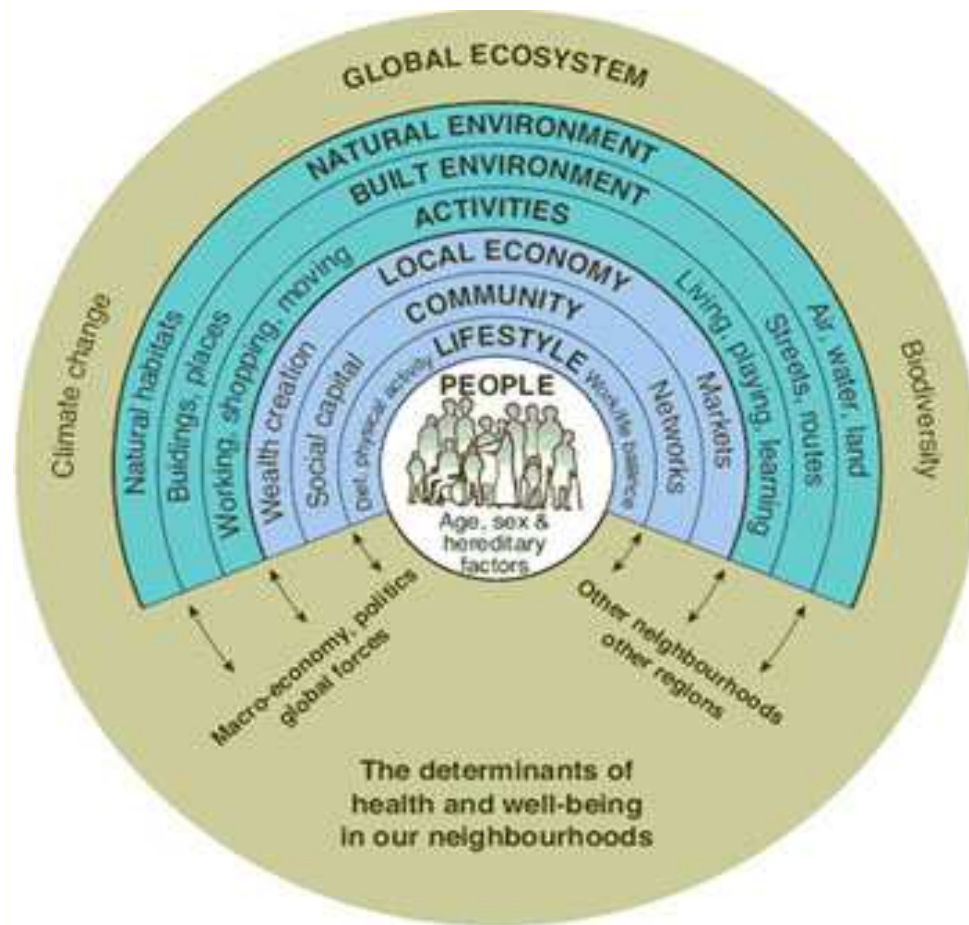
West Area Committee

Directory of Public Health Commissioned Services



Nottingham
City Council

Determinants of health



- The strength of the evidence linking social determinants to good and poor health has been clearly demonstrated in the Marmot Review (2010) (*Fair Society, Healthy Lives*).

Public Health Services Update

Service Name	West Area Residents Accessing April – June 2014 (City Wide Data)	West Area Residents Accessing April 2013 – March 2014 (City Wide Data)
PH Nutrition Team	47 (202)	172 (1463)
Slimming World	109 (34 ≥ 5% weight loss) (537)	537 (209 ≥ 5% weight loss) (2682)
Motivate Men's Health	6 (61)	48 (319)
Active for Life	77 (496)	496 (1979)
Be Fit	143 (1412)	251 (4434)



Public Health Services Update

Service Name	West Area Residents Accessing April – June 2014 <i>(City Wide Data)</i>	West Area Residents Accessing April 2013 – March 2014 <i>(City Wide Data)</i>
New Leaf Stop Smoking Service	151 <i>(1095)</i> 49 had quit for 4 weeks	708 <i>(4434)</i> 340 had quit for at least 4 weeks



Public Health Services Update

Service Name	West Area Residents Accessing April – June 2014 (City Wide Data)	West Area Residents Accessing April 2013 – March 2014 (City Wide Data)
NHS Health Checks	43 (1114)	352 (6295)
Healthy Change Referral Hub	163 (765)	535 (3003)

Public Health Services Update

Service Name	West Area Residents Accessing April – June 2014 (City Wide)	West Area Residents Accessing April 2013 – March 2014 (City Wide Data)
School Nursing Service	874 (4000)	2402 (13,097)
Avoidable Injuries Project: IMPS	3 Schools Visited (18) 3 Hospital Visits (19) 80 Pupils Targeted (550)	7 Schools Visited (67) 12 Hospital Visits (88) 340 Pupils Targeted (2381)
Dental Health Promotion	<ul style="list-style-type: none"> 9 schools supplied with Teeth Tools for Schools (TT4S) resources 3,749 students contacted 2 schools actively using TT4S 3 special schools actively using TT4S 252 students actively engaged 	<p>Total Numbers City Wide 2013 / 14</p> <ul style="list-style-type: none"> •76 Schools supplied with Teeth Tools for Schools resources •26,820 children contacted •9 schools actively using TT4S •5 special schools actively using TTFS •450 students actively engaged

Public Health Services Update

Sexual Health

During 2013/14 there were 38,695 attendances at sexual health services by Nottingham City residents

Of these attendances 2,614 were residents of Aspley and 1,743 of Aspley resident attendances were at Victoria Health Centre

Public Health Services Update

Sexual Health

Sexual health clinic access in the West Area by Nottingham City residents (2013/14):

- Bilborough College: 298
- Strelley Health Centre: 140

C-Card registration and pick up is provided at approximately 15 sites across the West Area

Public Health Services Update

Any questions?